

**Long-term Effects of Recommendations and School Entry Requirements on Hepatitis B Vaccine Coverage**

- [K. Michael Peddecord](#), Mark H. Sawyer, Robert Vryheid, Nancy Fink, Wendy Wang, Michelle Deguire, Sandy Ross, and Kathe Gustafson. San Diego Immunization Program, County of San Diego Health and Human Services Agency, PO Box 85222, Mail Stop P511B, 3851 Rosecrans Street, San Diego, CA, USA

**OBJECTIVE**

- **Assess HBV coverage for children aged 3-17 years in San Diego County.**
- **Interpret differences in HBV coverage rates in relation to school entry requirements.**

## BACKGROUND

- **Routine infant hepatitis B vaccine (HBV) immunization recommended since 1991**
- **Routine vaccination of adolescents 1996**
- **California school entry requirements for HBV**
  - **Kindergarten or Child Care 1997**
  - **7th grade 1999**
  - **4 yr state colleges – 2000 (Less than 18 years)**

## **2003 San Diego County RDD Telephone Surveys**

Surveys conducted April - June 2003

◆ **Adult Survey:**

50 years and older (1383)

18-49.9 years (1483)

High Risk Adults (469)

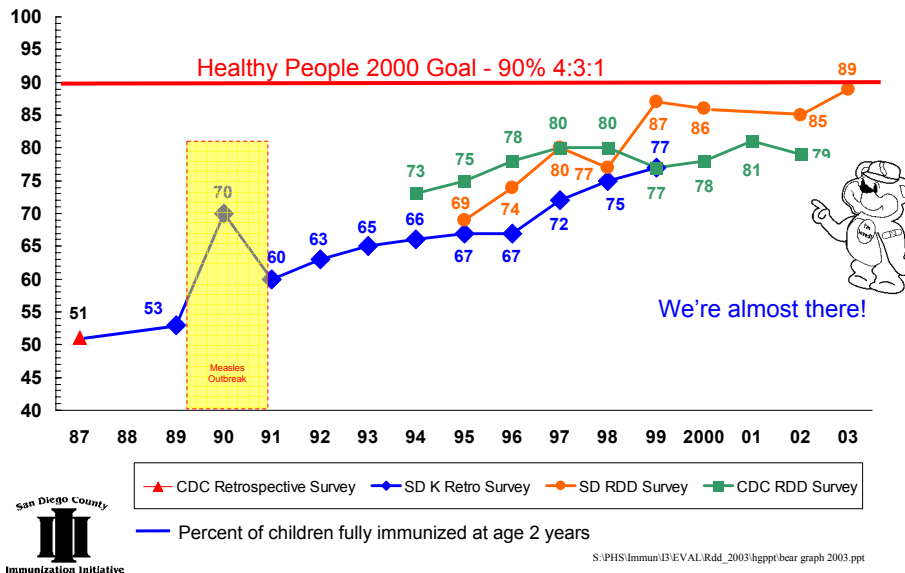
Other Adults (1014)

◆ **Expanded Survey: 3 – 17.9 years (1441)**

◆ **Infant Survey: 19 – 35.9 months (902)**



## San Diego County's Immunization Progress



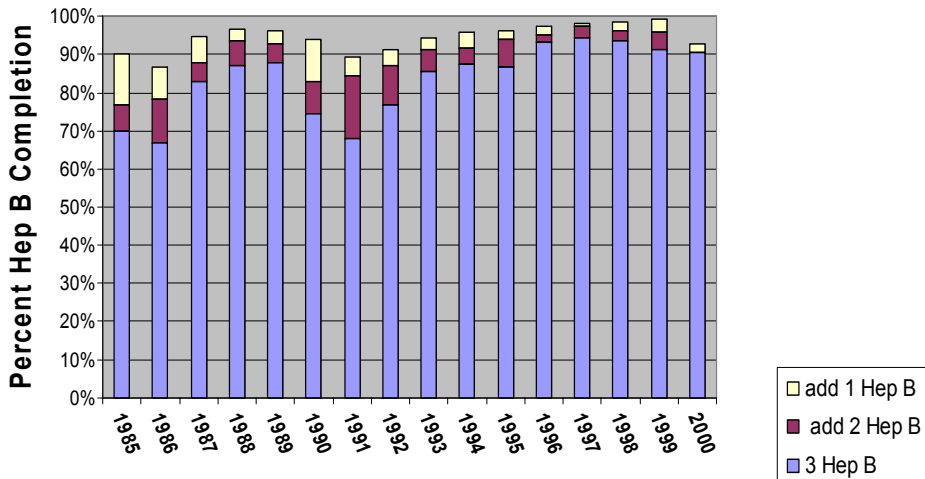
## Methods Random Digit Dial Survey

- Calls
- Completion and Rate
- Comparison with Census

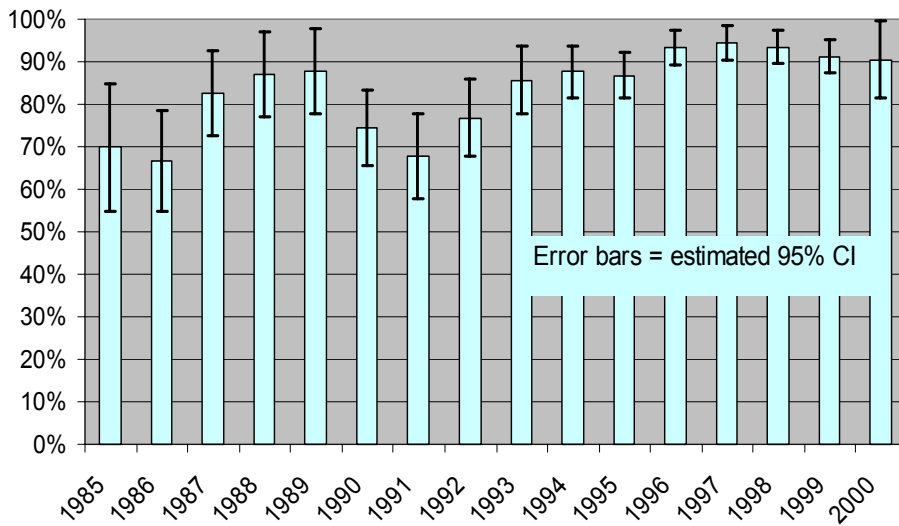
## Calls and Response Rate

- **Total Phone numbers 65,616**
- **No Answer or Voice Mail 38,041 (58%)**
- **Business, Fax, Disconnects 7,054 (11%)**
- **Busy or Call Back 5,328 (8%)**
- **Refused, Lang. Barrier 4297 (7%)**
- **Completed/(completed + terminated)=  
Response Rate 1455/1455+433 = 77%**

### Complete and Started Hep B series by Birth Year



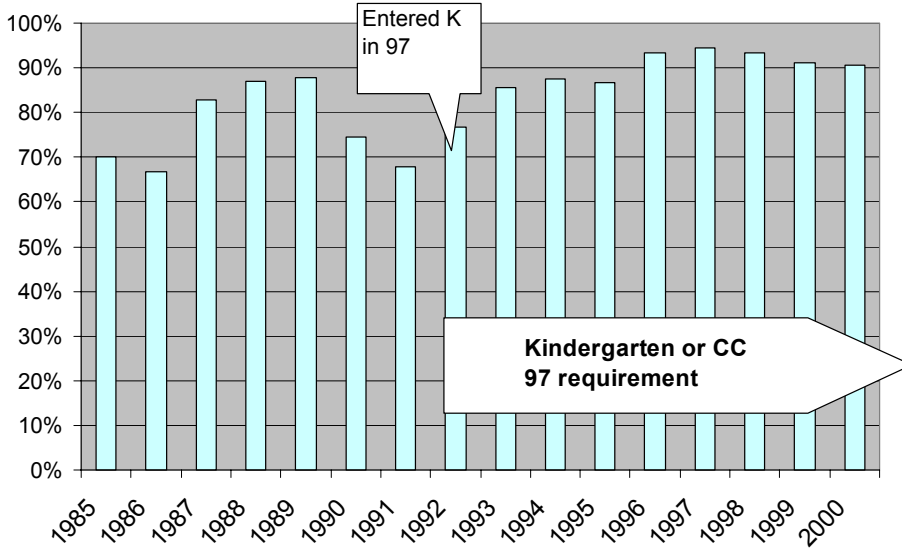
**Percent with Completed Hep B Series by Year of Birth,  
2003 RDD Survey, San Diego Co.**



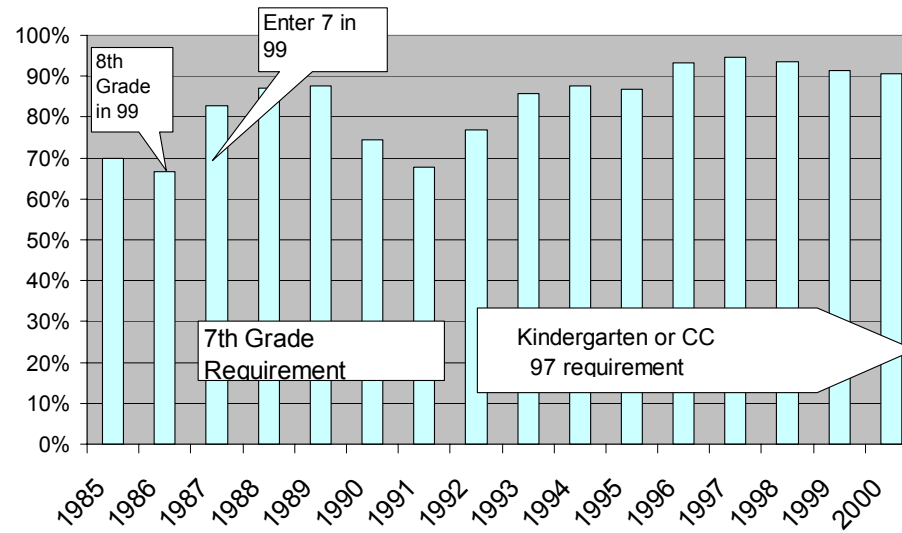
## Coverage by Year of Birth

- **Very high levels of coverage (80%+) attained for all kids born after 1993 and those born in 1987,1988, 1989.**
- **Lowest rates were found for kids born in 1995 & 1996**
- **1990, 1991, 1992 showed somewhat lower levels than birth cohorts before and after.**

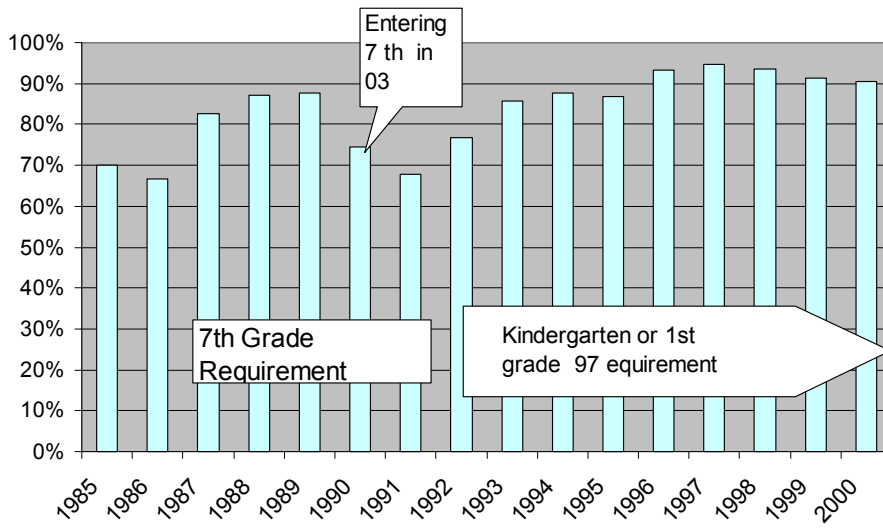
**Percent with Completed Hep B Series by Year of Birth, 2003 RDD Survey, San Diego Co.**



**Percent with Completed Hep B Series by Year of Birth, 2003 RDD Survey, San Diego Co.**



**Percent with Completed Hep B Series by Year of Birth, 2003 RDD Survey, San Diego Co.**



## Limitations

- **Response Bias**
- **Small samples in some years**
- **Grade and age not uniform**
- **Some kids enter school from out of state**

## **CONCLUSION & RECOMMENDATION**

- **The slight decline in HBV coverage in the 1991 to 1993 birth cohorts may be from children who entered school before implementation of the hepatitis B kindergarten/first grade law and who have not yet been affected by the 7th grade law.**
- **For maximum coverage, the 7th grade school requirement should remain in effect and be enforced by schools during the 2004-05 and 2005-06 school years.**